

*Profile*



**CREATIVE LOGISTICS SOLUTIONS**

# Corporate Philosophy and Quality Policy



## OFF QUALITY POLICY

We – The Management and Staff of  
**ORIENT FREIGHT INTERNATIONAL, INC.**  
are committed to  
**TOTAL CUSTOMER SATISFACTION**  
by providing  
**QUALITY SERVICE**  
In support of our **CORPORATE PHILOSOPHY**

*These shall be achieved by our highly motivated Managers and Employees whose professionalism, dedication, training and experience are our assurance for continued growth and success.*

## CORPORATE PHILOSOPHY

### VISION:

- To become the recognized industry leader in Creative Logistics Solutions.

### MISSION:

- To ensure total customer satisfaction by providing efficient, reliable, economical, and innovative logistics and multi-modal transport services.







## From brokerage to “complete creative logistics solutions”



## Brief History



**Orient Freight International, Inc. (OFII)** was established in 1973 as a corporation and a licensed customs broker and freight forwarder, specializing in cargo transportation and allied services. OFII is a member of the Rayomar Group, which has extensive investments in shipping, logistics and trading. The Rayomar Group is composed of 20 companies and employs over 1000 people.

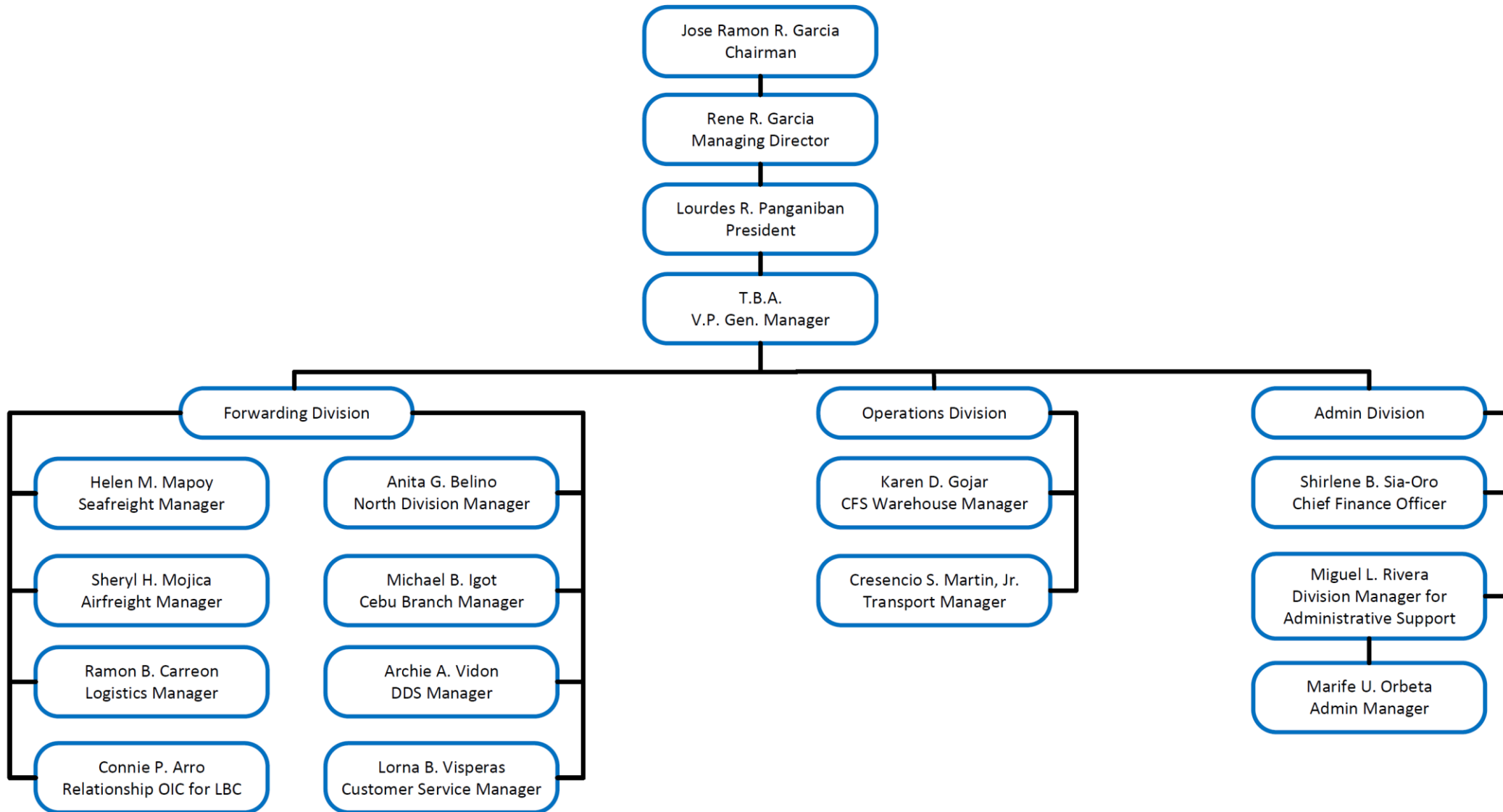
**Orient Freight International's** Executive Office is located in Makati and employs 140 people nationwide. OFII manages branch offices in Manila, Cebu, Subic, Clark, Mariveles, Laguna, Cavite and Davao. In addition, Orient Freight International has contracted agents at the out-ports of Cagayan de Oro, Bacolod, Butuan, Cotabato, Tacloban, Zamboanga, General Santos, Iloilo and Ozamis.

# Team Rayomar





# Organizational Chart



## Our Services



**Orient Freight International, Inc.** is the largest independent international cargo in the Philippines. In addition to freight consolidation, OFII provides a full array of cargo forwarding and logistics services.



Air Freight  
Forwarding



Sea Freight  
NVOCC  
Forwarding



Domestic  
Distribution



CFS  
Warehousing



Logistics  
Management



Customs  
Brokerage



Supply Chain  
Management



Land  
Transportation

## Our Services



Multi IATA Direct Loading



Airfreight Customs Clearance



DG Cargo Handling



Door-to-Door/Express Service



Third-Party Logistics

### ☐ **Business partnership with major airlines and forwarder**

(Continuously obtain best rate and service package with major airlines).

### ☐ **Time definite airfreight delivery at competitive pricing**

(Partnership with major and reliable airlines and forwarder for better pricing and space commitment).

### ☐ **Participates in RFQs or Global bidding**

(Actively supports biddings for small and big clients, both for global and regional requirements).

### ☐ **Provide spot quotes outside the normal bidding process**

(Monitors market and provide spot quotes due to changing market)

### ☐ **Provide 3PL services**

(Ex: Trucking, Documentation Management & Processing, Warehousing, Packing & Crating)

# Air Freight Capabilities



## Our Services



**NVOCC (Non-Vessel Operating Common Carrier)**



**3<sup>rd</sup> Party Logistics (Origin Vendor - P.O. Management)**



**Special Freight Handling  
(Commercial and Non-Commercial Cargo)**

# Sea Freight Forwarding Capabilities

## Our Services



### NVOCC (Non-Vessel Operating Common Carrier)

#### ☐ Business partnership with major ocean carriers

(Signs contracts with major ocean carriers for better pricing and space allocation)



#### ☐ Consolidation and Deconsolidation

(Performs consolidation and deconsolidation; provide cost analysis for LCL and FCL )

#### ☐ Report and KPI Management

(Provides reports and data analytics)

# Sea Freight Capabilities

## Our Services



### Origin Vendor/P.O. Management

#### ☐ Vendor Management

(Manage compliance in: production, booking, cargo load, cargo delivery, documents, etc.)

---

#### ☐ Purchase Order Management

(Manage accuracy on actual PO shipped vs planned down to SKU level, real time booking and shipment visibility, etc.)

---

#### ☐ Booking Management

(Manage compliance in carrier allocation & loadability. Perform forecast with carriers.)

---

#### ☐ Cargo Receiving Management

(Monitor accuracy & timeliness on cargo condition, labeling/scanning, cargo info., etc.)

---

#### ☐ Container Loading Management

(Optimize container load, equipment mix & cargo mix, loading guides compliance, security, etc.)

---

#### ☐ Cargo Shipping Management

(Monitor carrier performance and booking acceptance)

---

#### ☐ Document Management

(Manage vendor document collection, checking, verification, sorting & distribution, etc.)

---

## Sea Freight Capabilities



# Our Services



Dashboard

File Edit View Favorites Tools Help

Home Modules VMS 2.0 Search Reports Logout Quick Search

Register for VMS® Mobile

Questions or comments on VMS Mobile? [Click Here](#)

Tools  
[Conversions](#)  
[Document Center](#)  
[Exchange Rate](#)  
[World Time](#)

Schedules  
[K Line Schedule](#)  
[Ship Schedules](#)  
[Ship Schedules](#)

Information  
[New VMS 2.0 Information](#)  
[New Search Features Guide](#)  
[C-TPAT](#)  
[Century Offices](#)  
[SOLAS](#)

Origin Booking  
 Alerts  
 Packing  
 VGM

Origin EDocs Management (11/20/2017 10:59 AM)  
 2.0 Origin EDocs Management (11/20/2017 0:00 AM)  
 2.0 VGM Transmission Status RTN (11/20/2017 0:00 AM)  
 2.0 Master Vessel Schedule Change (11/20/2017 10:59 AM)  
 2.0 Bookings Not Received at CFS Warehouse (11/20/2017 0:00 AM)  
 2.0 Mother Vessel Connections - Origin Management (11/20/2017 10:59 AM)  
 2.0 Pending/Late Document(s) Upload - Origin Management (11/20/2017 10:59 AM)  
 2.0 Origin Booking / Carrier SO Process Milestones (11/20/2017 10:59 AM)  
 2.0 Late Document Notification (11/20/2017 10:59 AM)  
 Pending/Late Document(s) Upload - Origin Management (11/20/2017 0:00 AM)  
 Inaccurate ESN RTN - Origin Management (11/20/2017 0:00 AM)  
 eDocs Management (8/3/2015 6:48 PM)

Workflow  
 New Booking(s) - New (8/3/2015 6:48 PM)  
 2.0 Manifest - ESN Approval (11/20/2017 0:00 AM)

Holidays  
[Holiday Calendar](#)

Customer Information  
 VGM\_Demo  
 AmazonSOP  
 AMZ\_Training\_Demos  
 Specialized/Global Master List  
 SOP/Amazon\_Europe  
 SOP/Amazon  
 SOP/IDRI  
 Specialized/LATAM Shipping Instructions  
 AMZ\_Vendor

Message

https://kibvms.com/VMS/pagelayout.aspx?modules=Obm&configName=ObmMain

ENG 3:33 PM  
 INTL 11/20/2017

century VMS®  
 Visibility Management System

Username

Password

Login

[I forgot my password](#) [I forgot my username](#)

Obm Workspace

File Edit View Favorites Tools Help

Home Modules VMS 2.0 Search Reports Logout Quick Search

20 ft. Dry Reefer  
 20 ft. Dry Reefer  
 20 ft. Dry Reefer

Item Detail

Drag here to set row groups

	PO Number	Product Number	Color	Size	PO Final Destination	PO Type	PackType	Carrier Item Description	Range Key	Booked Cartons
1	1649870	631146136	STRIPE cw. 34	X SMALL	NLBZM	INI	Loose	WMNS KNT 60CT40PL FLCE PLLVR	01	1
2	1649870	631146153	SKY CAPTAIN	X SMALL	NLBZM	INI	Loose	WMNS KNT 60CT40PL FLCE PLLVR	01	7
3	1649870	631146031	DRY ROSE	X SMALL	NLBZM	INI	Loose	WMNS KNT 60CT40PL FLCE PLLVR	01	2
4	1649870	631146111	BLUSH	XX SMALL	NLBZM	INI	Loose	WMNS KNT 60CT40PL FLCE PLLVR	01	4
5	1649870	631146129	BLUSH	X SMALL	NLBZM	INI	Loose	WMNS KNT 60CT40PL FLCE PLLVR	01	8
6	1649870	631146145	SKY CAPTAIN	XX SMALL	NLBZM	INI	Loose	WMNS KNT 60CT40PL FLCE PLLVR	01	9
7	1649870	631145847	STRIPE cw. 34	XX SMALL	NLBZM	INI	Loose	WMNS KNT 60CT40PL FLCE PLLVR	01	2
8	1649870	631145935	CAMO	XX SMALL	NLBZM	INI	Loose	WMNS KNT 60CT40PL FLCE PLLVR	01	5
9										
Total										178

1 to 36 of 36 First Previous Page 1 of 1 Next Last

ENG 3:35 PM  
 INTL 11/20/2017

## Our Services



## Products & Industry Solutions

### Our Portfolio

#### Special Freight Handling

Commercial – Automotive, Fashion, HealthCare, Perishables)

(Non-Commercial – Household Goods and Personal Effects)

#### Air Freight



#### Sea Freight



#### Customs Brokerage



#### Contract Logistics & Consulting



#### Land Transport



#### Special Products/ IT Solutions



#### Products

#### Key Industry Solutions



Automotive



Fashion



Healthcare



Perishables



Non-Commercial Freight (Household Goods & Personal Effects)



# Sea Freight Capabilities



## Our Services



LOGISTICS

Total Logistics Management

LOGISTICS

Chemical Logistics (Bulk Liquid Logistics)

LOGISTICS

Break bulk and OOG handling - oversized, over dimensional or overweight loads

LOGISTICS

Perishable Logistics

LOGISTICS

Automotive Logistics

# LOGISTICS

Specialized Logistics Solutions Capabilities



## Our Services



### Logistics Department

Orient Freight's Logistics Department provides three (3) major services to our clients. These are Customs Clearance/Brokerage, In-plant Logistics Service, and Auto-logistics. These services depict our goal to deliver creative logistics solutions tailor-fitted to our clients' requirements. Foremost in our objectives is to ensure efficiency and effectivity in all activities rendered by our personnel and resources.

The department is composed of experienced and highly analytical personnel, registered and licensed by the government, to offer their respective expertise and competence in all performed tasks in the aim of serving the clients to the fullest satisfaction. The department also prides itself as the pioneers in offering the current services to clients which other logistics providers attempt to replicate.

### Our Location

The core team is strategically situated in the heart of the city's CBD to better attend to clients' requirements and only a stone's-throw away in proximity from both the air and sea ports. Here is where the brain thrust of the department thinks of means and ways to innovate our services to the ever changing demands of the clients.

Our in-plant logistics teams' visibility to the clients' facility also adds assurance to the clients that we are willing and ready to immediately cater to their dynamic requirements.

# Specialized Logistics Solutions Capabilities

## Our Services



Custom Brokerage and Delivery Services for import & export, 3PL, tariff consultation, customs declaration, securing government permits, licenses



Transshipment Services for PEZA, Freeport Zones, and Customs Bonded Warehousing



In-plant Services - Import & Export Documentation, Container Inventory Management, Inter facility shunting services and transport management



Project Cargo – Heavy lift & bulk cargo handling, Custom releasing & Delivery in special trailers, Vehicle Clearance and Car Carrier Delivery services



# Logistics and Customs Brokerage Capabilities



## Our Services



## Customs Clearance/Brokerage



The Logistics Department caters to clients' customs clearance and delivery requirements. With its expertise in the brokerage industry coupled with a truck fleet capability ready to serve deliveries from simple cargoes to the most complex "out of gauge" shipments. The department employs a handful of licensed customs brokers and customs declarants skilled to process shipments from anywhere in the world as its origin and can identify the right HS code thereby computing for the accurate amount of customs duties and taxes that the shipper/consignee should be paying.

## Specialized Logistics Solutions Capabilities



## Our Services



## Auto-Logistics Service

OFII started working with a major car manufacturing company back in 1988. We were initially providing customs clearance and delivery of completely build units (CBU) imported from Japan. Then we expanded to stockyard and deliveries to supply semi-knockdown units to feed their production line. With their volume and production demand grew bigger, they decided to relocate their plant from Bicutan to Sta Rosa, Laguna. Since we have been partners ever since, they required us to aid them in their turnkey projects serving customs clearance, delivery, and installation of their plant and production line equipment. Currently, we are serving Client for their customs clearance, ATRIG application, Port Operations, and in-plant services for the logistics of their importation and exportation of completely build units (CBU).



## Specialized Logistics Solutions Capabilities

## Our Services



Transport cost reduction strategies carrier rate and accessorial charge negotiations (all modes)

Sustainable Improvement programs, consolidations, stop-offs, pooling, zone skipping, mode alternatives and private carriage

JIT inventory and delivery

Value added services - pick and pack, assembly, bundling, sorting, labelling

End to end value chain design



# Supply Chain Management Capabilities



## Our Services



## DOMESTIC DISTRIBUTION SERVICES

DDS Department provides in-land freight, domestic forwarding and warehousing services. Its main objective is to ethically deliver quality customer service through ensuring the products and services of its clientele are available in the market on time, with the right quantity and quality.

The Department is committed to continuously evolve to satisfy its stakeholders' changing and competitive service requirements. Designed and implement “lean programs” to continuously improve the services the Department provides. Dedicated to hone and nurture its personnel to foster collaborative team, conducive and robust working environment.

## OUR FACILITY

DDS new and better storage and distribution hub is located at LYL Business Industrial Park along Governors Drive Carmona, Cavite, a very accessible area with good traffic situation and great atmosphere.

Designed to accommodate different product movement requirements including cross-docking. Equipped with racking system and has controlled temperature rooms for products which require special handling/storage. It has six loading bays, two ramps and huge maneuvering area to accommodate multiple incoming and outgoing shipments simultaneously.

Manned by security guards 24/7 with surveillance cameras inside and outside facility perimeter.

# Supply Chain Management Capabilities



## Our Services



Warehousing



In-land  
Freight/Trucking



Domestic  
Forwarding

Supply Chain Management Capabilities

## Our Services



### Warehousing

Our facility offers storage for products which require ambient and controlled room temperature. Acquired Warehouse Management System (WMS), INFOR for proper and better inventory management. Through INFOR, DDS clients receive accurate, complete and on time inventory report.

Aside from storage, the Department provides value added services such as labelling, bundling/kitting and crating.

Assigned dedicated team to monitor and implement warehouse activities and improvement requirements.

---

Stripping/Unloading

---

Storage (Ambient and Cooled rooms)

---

Cross docking

---

Value  
Added  
Services

---

Labelling

---

Bundling/Kitting

---

Crating

---

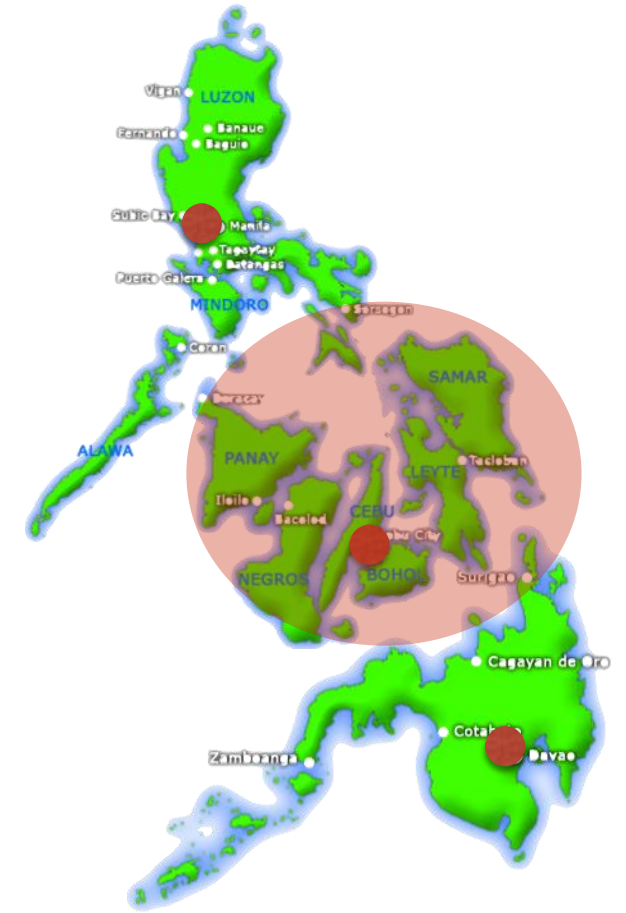
# Supply Chain Management Capabilities

## Our Services



### In-land Freight/Trucking

- ❑ In-land freight/trucking is one of DDS Department's services. The last mile service to deliver the goods of its clients to its ultimate customers. Together with its reliable partners DDS able to deliver to any point in Luzon.
- ❑ DDS acquired few closed vans to ensure truck availability and clients truck booking will be served.
- ❑ With dedicated Trucking Team who provides on time delivery reports, proper documentation and continues service improvements.



## Supply Chain Management Capabilities

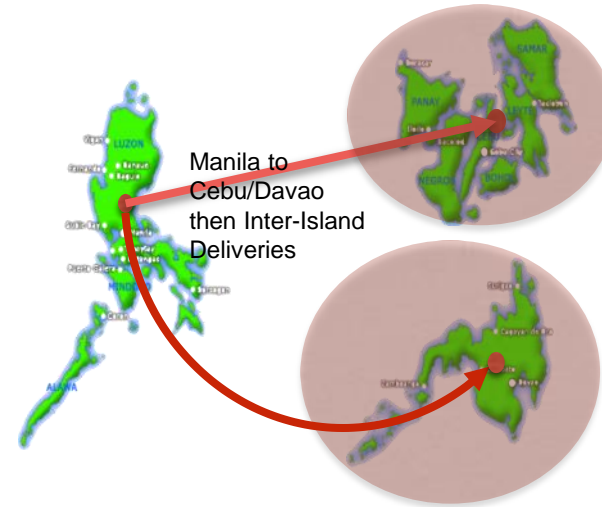


## Our Services



### Domestic Forwarding

- ❑ Domestic air freight and sea freight complete DDS Department's services. Delivery service which covers the entire Visayas and Mindanao including reverse logistics and inter-island deliveries.
- ❑ With strong partnership with LBC, local shipping lines and airlines the Department able to satisfy the domestic forwarding service requirements of its clients.
- ❑ Dedicated team was created to ensure complete delivery monitoring, reports are provided on time, necessary documents are available and continues service improvements are deployed.



## Supply Chain Management Capabilities

## Our Services



Inventory Accuracy

Order Fill Rate

Delivery Performance

Document Return Performance

Document Countering  
Performance

## KPIs

98% -  
100%  
Hit  
Rate

To maintain quality customer service and manage clients' expectations. DDS Department and its clients jointly discuss and set Key Performance Indicators, Service Performance measurement which covers receiving of inventory, put-away, picking, dispatching, delivery, documentation and countering

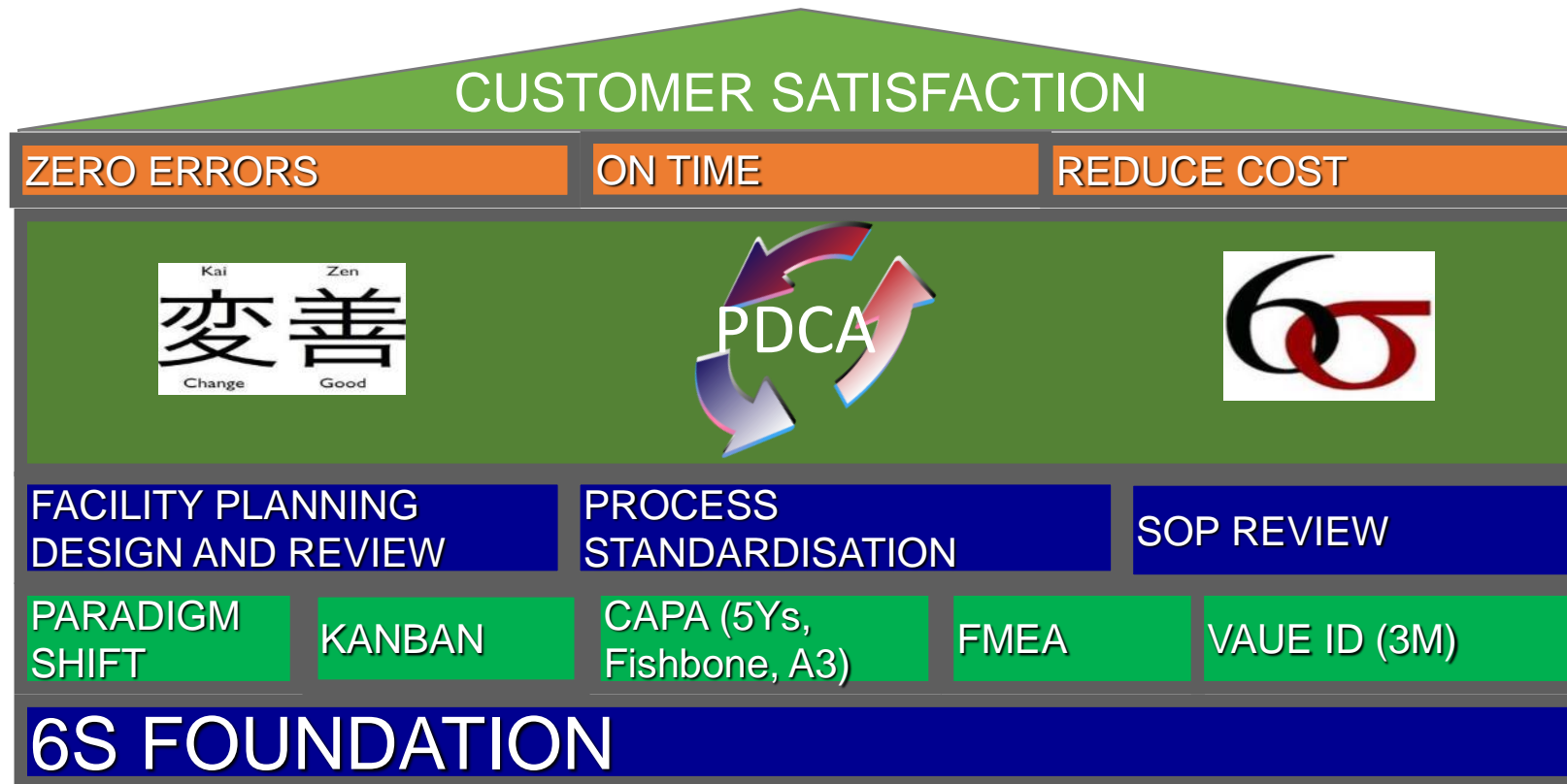
Through Customer Service Representative Team (CSR Team), Daily Stock on Hand Report is provided to each client including In-bound and Out-bound Reports. Complete visibility and movement of clients' inventory.

# Supply Chain Management Capabilities

# Our Services



## House of Quality / Operational Excellence



Supply Chain Management Capabilities



## Our Services



Orient Freight International, Inc.'s new and better storage and distribution hub is located at LYL Business Industrial Park along Governors Drive Carmona, Cavite, a very accessible area with good traffic situation and great atmosphere.



Manned by security guards 24/7 with surveillance cameras inside and outside facility perimeter.

Designed to accommodate different product movement requirements including cross-docking. Equipped with racking system and has controlled temperature rooms for products which require special handling/storage. It has six loading bays, two ramps and huge manoeuvring area to accommodate multiple incoming and outgoing

# Supply Chain Management Capabilities

## Our Services



Storage of cargoes for import and export



LCL cargo consolidation



Container vanning and devanning



Cargo segregation and marking



## CFS Capabilities



## Our Services



- ☐ Orient Freight's Container Freight Station is a customs bonded warehouse with 38 years of service and a pioneer in import/export consolidation.
- 

- ☐ OFII CFS services includes stripping & handling of cargoes, crating and packing, and local storage/warehousing, import/export cargo, cargo segregation and marking.
- 

- ☐ We also provide assistance to clients in transferring goods/shipments from port to our warehouse facility.
- 

- ☐ Supported by dynamic system and computerized programs ensures accurate preparation of billing for the timely release of cargoes/shipments.
- 

- ☐ We are also equipped with WMS systems which provides proper monitoring of cargoes/shipment inside the warehouse premises.
- 

## CFS Capabilities

## Our Services



- ❑ Our bonded CFS is a facility with an area of more than 4,000 sq. meters and a warehouse capacity of more than 4,500 cbm.
- ❑ Our warehouse facility has 11 ramping container bays for unloading and 11 docking bays for loading of cargoes. The facility is equipped with three (3) units of forklift and four (4) units of jack pallets.
- ❑ High level of security with well-trained personnel that ensures safety of cargoes/shipments.
- ❑ Member of Association of CFS Operators of the Philippines (ACOP), an association accredited by the Bureau of Customs.
- ❑ Processing Occupational, Health and Safety Program.
- ❑ ISO 9001 Certified.

## CFS Capabilities



## Our Branches



## CEBU DEPARTMENT



## Logistics Services

Brokerage and Customs Releasing

Sea Freight Export and Import

Air Freight Export and Import

Off-dock Container Yard Station (CFS)

Local Warehousing and Forwarding

## Our Branches



## CEBU & DAVAO Operation





# I.T. Tools



## WMS

Reduce costs and improve throughput by streamlining the receiving process with POs or ASNs at the warehouse with appointments and dock door scheduling, in combination with RF confirmation at the case or pallet level.

Improve operational efficiency and speed up processes by configuring putaway plans that move product directly to primary pick faces or preferred zones for optimum replenishment and picking. Maintain real time inventory with attribute visibility (perishable, manufacturer date, serialization number and more) at the discreet location level.


The screenshot displays the Infor SCE WMS interface. The top section shows the 'Infor SCE' logo and a login form with fields for 'User ID' and 'Password'. Below this, the 'ASN/Receipt' screen is visible, showing a table of ASN/Receipt records. The table has columns for 'ASN/Receipt', 'Owner', 'Warehouse', 'Expected Receipt Date', 'External Receipt', 'Carrier Reference', 'Last Receipt Date', 'Receipt Status', 'Type', 'Closed Date', and 'Transportation status'. The bottom section shows the 'Shipment Order' screen, which displays a table of Shipment Order records. The table has columns for 'Order Number', 'Owner', 'External Order #1', 'Type', 'Ship To Name', 'Priority', 'Status', 'Order Date', 'Requested Ship Date', and 'Actual Ship Date'.

ASN/Receipt	Owner	Warehouse	Expected Receipt Date	External Receipt	Carrier Reference	Last Receipt Date	Receipt Status	Type	Closed Date	Transportation status
0000002284	ISCI	STB0011115		SFO-A-1881		10/12/17 8:23 AM	Received	Normal		
0000002293	ISCI	STB0011114		DRR01431.01...		10/12/17 8:23 AM	Received	Normal		
0000002292	ISCI	STB0011112		MIR#0922		10/11/17 4:13 PM	Received	Normal		
RTV-14040A	ISCI	RTV GOOD	14040A	WMSRTV-14040A	TUNASAN GROCERY	10/11/17 3:54 PM	New	CustomerReturn		
0000002289	ISCI	STB0011108		DRR01431		10/11/17 2:35 PM	Received	Normal		
10112017G	ISCI	RMRW020851A		RG8-9377		10/11/17 1:01 PM	Received	Normal		
RG8-9377	ISCI	MKTG GOOD	RMRW020851A	RG8-9377		10/10/17 7:58 PM	Received	Normal		
0000002286	ISCI	MKTG GOOD	RMRW020851A	Q3 W2W		10/10/17 7:54 PM	Received	Normal		
34490	ISCI	MKTG GOOD	RMRW012910A	34490		10/10/17 7:48 PM	Received	Normal		
7967986A	ISCI	MKTG GOOD	RMRW012909A	7967986		10/10/17 7:42 PM	Received	Normal		
7967986	ISCI	MKTG GOOD	RMRW012909A	7967986		10/10/17 7:35 PM	Received	Normal		
7877975	ISCI	MKTG GOOD	RMRW012911A	7877975		10/10/17 7:33 PM	Received	Normal		
101017GOOD	ISCI	RTV GOOD	101017GOOD	101017GOOD		10/10/17 7:02 PM	Received	Normal		
0000002279	ISCI			Q3 W2W		10/10/17 6:08 PM	Received	Normal		

Order Number	Owner	External Order #1	Type	Ship To Name	Priority	Status	Order Date	Requested Ship Date	Actual Ship Date
15551	OMI	WMS15551	Standard Order		5 - Lowest Priority	Shipped Complete	10/13/17 2:54 PM	10/13/17 12:00 AM	10/13/17 2:55 PM
S-101317A	OFFICE SUPPLIES	WMS-101317A	Standard Order	TRUCKING REQUEST	5 - Lowest Priority	Allocated	10/13/17 2:50 PM		
0000003406	FLA	WMS0000003406	Standard Order	Fla Warehouse	5 - Lowest Priority	Allocated	10/13/17 2:36 PM		
S-101317	OFFICE SUPPLIES	WMS-101317	Standard Order	accounting request	5 - Lowest Priority	Part Allocated	10/13/17 9:18 AM		
PM-101317	PM NUTRITION	WMSPM-101317	Standard Order	SHARLENE PELORIN PAMPANGA MCKENZIE DISTRIBUTION CO., INC.	5 - Lowest Priority	Allocated	10/13/17 8:48 AM	10/13/17 12:00 AM	
25680	MANDOM	25680	Standard Order		1 - Highest Priority	Allocated	10/13/17 8:28 AM	10/13/17 12:00 AM	
128403	OMI	128403	Standard Order	Taste Matters Inc	1 - Highest Priority	Part Allocated	10/13/17 3:00 AM	10/13/17 3:00 AM	
128402	OMI	128402	Standard Order	Taste Matters Inc	1 - Highest Priority	Allocated	10/13/17 3:00 AM	10/13/17 3:00 AM	
128401	OMI	128401	Standard Order	Cafe Italiano (Mail of Asia) Corp.	1 - Highest Priority	Allocated	10/13/17 3:00 AM	10/13/17 3:00 AM	
128398	OMI	128398	Standard Order	Bistro Americano (Paseo del)	1 - Highest Priority	Allocated	10/13/17 3:00 AM	10/13/17 3:00 AM	
128395	OMI	128395	Standard Order	Entrata Hotel	1 - Highest Priority	Allocated	10/13/17 3:00 AM	10/13/17 3:00 AM	
128245	OMI	128245	Standard Order	Services Inc	1 - Highest Priority	Allocated	10/13/17 3:00 AM	10/13/17 3:00 AM	
128036	OMI	128036	Standard Order	Green Bar Cafe (Sapa Green Bar)	1 - Highest Priority	Allocated	10/13/17 3:00 AM	10/13/17 3:00 AM	

# I.T. Tools



  
logi-sys

User ID   
Password

[Features](#) [Contact Us](#) [Terms of Use](#) [© Softlink Global Pvt. Ltd.](#)

Logi-Sys is a web based comprehensive ERP application especially designed for Logistics Service Providers (LSP).

Logi-Sys integrates the entire functions of a logistics service provider and offers enhanced level of flexibility enabling optimization of business processes. Logi-Sys is a feature-packed application that automates the processes with a view to enhance the efficiency in operations and reduce costs.

My Logisys Transactions Report Directories Administration Tools Disclaimer Terms of Use

Current Working Period 01-Jan-2018 - 31-Dec-2018

[Change Branch](#) [Alert](#) [In-Box \(1\)](#) [Sign Out](#)

User:Administrator (ADMIN,Forwarding - Makati)

© Softlink Global Pvt. Ltd.

Transactions

Booking  
Forwarding  
International  
Air Export  
Sea Export  
Consol  
Tracking  
Consol Helper  
Containers  
Carrier Booking  
Ocean BK/SL EDI Lo  
HBL Stock  
Sailing Schedule  
Land Export  
Air Import  
Sea Import  
Land Import  
Tariff  
WIN Communicator  
Domestic

My Logisys  
Transactions  
Reports  
Directories  
Administration

Sea Export Shipment

Shipment No  
Consol Type  
Shipper  
Load Port

(All)  
Ship Date  
Status  
Consignee  
Disch. Port

Shipment Date  
Status  
Consignee  
Disch. Port

Active Yes  
(Any)

[Advance filter](#)  
[Clear](#)

Items in bold indicates shipment linked with consol. Items in green indicates shipment whose consol is closed.

OL	FL	Shipment No	Date	Shipper	Consignee	Master Notify	Loading Port	Discharge Port	HBL No	Cons
		SE-S/MNLI0024/03.18	06-Mar-2018	TAIWAN SPECCO CO., L...	RICHHELIEU HARDWARE...		Manila	Vancouver	CRSA002002	
		SE-S/MNLI0023/03.18	02-Mar-2018	SCHNEIDER ELECTRIC IT...	SCHNEIDER ELECTRIC J...		Manila North H...	Tokyo		SE-S/
		SE-S/MNLI0022/02.18	21-Feb-2018	YOKOHAMA TIRE PHILIP...	F.M. NOORDIN & CO. PT...		Manila North Ha...	Chittagong	GES/101002	SE-S/
		SE-S/MNLI0021/02.18	19-Feb-2018	TAKATA (PHILIPPINE S) C...	TAKATA ROMANIA S.R.L.		Manila	Singapore	18MNLI000001	SE-C/
		SE-S/MNLI0020/02.18	15-Feb-2018	Leader Garments	REITMANS (CANADA) LI...		Manila	Vancouver	GES/101003	
		SE-S/MNLI0019/02.18	08-Feb-2018	AMERICAN POWER CON...	SCHNEIDER ELECTRIC		Manila North H...	Durban		SE-S/
		SE-S/MNLI0018/01.18	30-Jan-2018	SCHNEIDER ELECTRIC IT...	SYNNEX TECHNOLOGY I...		Manila North H...	Ha Kwai Chung		SE-S/
		SE-S/MNLI0017/01.18	30-Jan-2018	SCHNEIDER ELECTRIC IT...	SCHNEIDER ELECTRIC J...		Manila North H...	Chiba		SE-S/
		SE-S/MNLI0016/01.18	30-Jan-2018	SCHNEIDER ELECTRIC IT...	SCHNEIDER ELECTRIC J...		Manila North H...	Chiba		SE-S/
		SE-S/MNLI0015/01.18	30-Jan-2018	SCHNEIDER ELECTRIC IT...	SCHNEIDER ELECTRIC J...		Manila North H...	Chiba		SE-S/
		SE-S/MNLI0014/01.18	30-Jan-2018	SCHNEIDER ELECTRIC IT...	SCHNEIDER ELECTRIC J...		Manila North H...	Chiba		SE-S/
		SE-S/MNLI0013/01.18	30-Jan-2018	SCHNEIDER ELECTRIC IT...	SCHNEIDER ELECTRIC J...		Manila North H...	Chiba		SE-S/
		SE-S/MNLI0012/01.18	29-Jan-2018	SCHNEIDER ELECTRIC IT...	SCHNEIDER ELECTRIC J...		Manila North H...	Chiba		SE-S/
		SE-S/MNLI0011/01.18	29-Jan-2018	SCHNEIDER ELECTRIC IT...	SCHNEIDER ELECTRIC J...		Manila North H...	Chiba		SE-S/
		SE-S/MNLI0010/01.18	29-Jan-2018	SCHNEIDER ELECTRIC IT...	SCHNEIDER ELECTRIC J...		Manila North H...	Chiba		SE-S/
		SE-S/MNLI2471/0009/01.18	24-Jan-2018	H.B. GARMENTS INC.	REITMANS (CANADA) LI...		Manila North Ha...	Vancouver	CRSA002001RTM	
		SE-S/MNLI0008/01.18	23-Jan-2018	AMERICAN POWER CON...	AMERICAN POWER CON...		Manila South H...	Rotterdam		SE-S/

Show ByPage



# I.T. Tools



## Shipment Visibility Tool (BR2)

**BIG RED 2**

Login Password

\*\*\*\*\*

Login



Easy Tracking.

Easy Updates.

Easy Management.

**BIG RED 2**

Orders Bookings Search Alerts

tiffany.geronica | Oct 13 2017

### Booking Dashboard

#### Bookings

0

#### Departure Origin

12 of 33

#### In-Transit

4 of 151

#### Arrivals

4 of 40

#### Discharges

2 of 2

#### Deliveries

1 of 24

A service provided by [SHELL LOGISTICS](#). Created and managed by [SHELL](#). Copyright 2013 (c) ARG Consulting (Pty), Inc.

**BIG RED 2**

Orders Bookings Search Alerts

tiffany.geronica | Oct 13 2017

### For Departure in Origin Port

Status	Origin / ETD / New ETD	Destination / ETA / New ETA	Carrier	Tracking Number / Cntr. Number	Last Comment
Confirmed	Malaysia / Oct 11 2017 / -	Manila MCFP / Oct 15 2017 / -	Ben Line Agencies Philippines, Inc.	MALAYSIA / 220810073781	new est 10/13
Confirmed	Singapore / Oct 11 2017 / -	Manila MCFP / Oct 15 2017 / -	Ben Line Agencies Philippines, Inc.	SINGAPORE / 220810079729	new est 10/13
Confirmed	Chicago / Oct 12 2017 / -	Manila MCFP / Oct 31 2017 / -	Evergreen Marine Corp.	LAXMNLG / 317438	Est 10/12
Confirmed	Seattle / Oct 12 2017 / -	Manila MCFP / Oct 31 2017 / -	Evergreen Marine Corp.	LAXMNLG / 317451	Est 10/12

**BIG RED 2**

Orders Bookings Search Alerts

tiffany.geronica | Oct 13 2017

### Booking: UETU5476429 / Confirmed Booking

Send | Confirm | Arrived at Origin | Shift Container | Delivered | Received | Completed | Upload | Close | Exit

#### Latest Comment

New end 10/13 / -

#### Planned Route

Voyage / Trip	Vessel / Motor	Origin / ETD / ATD / New ETD	Destination / ETA / ASA / New ETA
1	GEORGE WASHINGTON BRIDGE (8800)	UAE // ETD: Oct 07 2017 / New ETD: Oct 13 2017	Singapore Port // ETA: Oct 31 2017 / New ETA: -

Add Trip

#### Status and ID

Timeliness Status	Indicator Status	Default
Shipper	LBC Mundial Corporation	Consignee
Status	Confirmed Booking	Current Location
		UAE

**BIG RED 2**

Orders Bookings Search Alerts

tiffany.geronica | Oct 13 2017

### Booking: BMOU4478788 / Arrived at Destination

Send | Confirm | Arrived at Origin | Shift Container | Delivered | Received | Completed | Upload | Close | Exit

#### Latest Comment

Vessel arrived at MCFP port / Early arrival, original eta 10/14

#### Planned Route

Voyage / Trip	Vessel / Motor	Origin / ETD / ATD / New ETD	Destination / ETA / ASA / New ETA
1	DOOL YU CHAMA (150)	Manila MCFP // ETD: Oct 11 2017 / ATD: Oct 11 2017 / New ETD: -	Manila MCFP // ETA: Oct 13 2017 / New ETA: -

Add Trip

#### Status and ID

Timeliness Status	Indicator Status	Default
Shipper	LBC Mundial Corporation	Consignee
Status	Arrived at Destination	Current Location
		Manila MCFP

#### Status and ID

Timeliness Status	Indicator Status	Default
Shipper	LBC Mundial Corporation	Consignee
Status	Confirmed Booking	Current Location
Origin	UAE	Destination
Original ETD	Oct 07 2017	ETA
ATD	-	Next ETA
Tracking Number	0100001	ATA
Carrier	HAFAG LLOYD	Opt Booking No
Voyage	None	Order
Created By	j.gallaga@lbcexpress.com	Proof of Delivery
Next Active Time	2017-10-12 16:00 GMT	Last Pickup
First Pickup	Oct 03 2017	Load Date
Forwarder	OFI	Boxes LBC
Broker	RV Estrella	Boxes Agent
Send Time	Oct 10 2017 12:35	CRM

**Big Red** provides visibility for end to end logistics transactions.

- Highlight transactions needing attention thru the Dashboard
- Full visibility of transactions not covered by ERP system
- Tool to minimize plant stock outs and production line stoppage
- Tool to manage goods deliveries
- Provide metrics showing actual performance vs. SLAs and KPIs

## Certification and Accreditation



Orient Freight International, Inc. is an ISO 9001 Certified Company by Bureau Veritas. We have upgraded our Quality Management System and recently passed the audit for ISO 9001:2015 version.

Orient Freight's warehouse facility is also CTPAT compliant.

Orient Freight is a member of:

- ☐ IATA (International Air Transport Association)
- ☐ PISFA (Philippine International Sea-freight Forwarders Association)
- ☐ ACOP (Association of CFS Operators of the Philippines)
- ☐ CTAP (Confederation of Truckers Association of the Philippines)





# Offices



## Head Office

4<sup>th</sup> & 8<sup>th</sup> Floors Country Space Building, Sen. Gil Puyat Avenue  
Makati City, Philippines

## DDS Warehouse

LYL Business Industrial Park, Governor's Drive, Carmona, Cavite

## CFS Warehouse

Perk Plus (Formerly Francisco Motors) J. Aguilar St., Talon Uno, Las Pinas City

## Transport

Room 253A, Myers Building, Corner R.S. Oca & A.C. Delgado St. South Harbor, Port Area, Manila

## Subic

Building 1041, Rizal Hi-Way, Subic Bay Freeport Zone, Olongapo City, Philippines

## Bataan

3/F Authority of the Freeport Area of Bataan, (AFAB) Building, Mariveles, Bataan

## Cebu

Unit 905 Cebu Holding Center, Cebu Business Park, Cebu City, Philippines

## Iloilo

Door 9 & 10, 3D FCRC Cmpd, Hechanova, Ilegan, Iloilo Province

## Davao

2<sup>nd</sup> Floor, Door 2, Malayan House, Lanang, Davao City

## Gensan

WH Door 1-4, RD City, Mindanao Economic Zone, Polomolok, South Cotabato, Philippines

